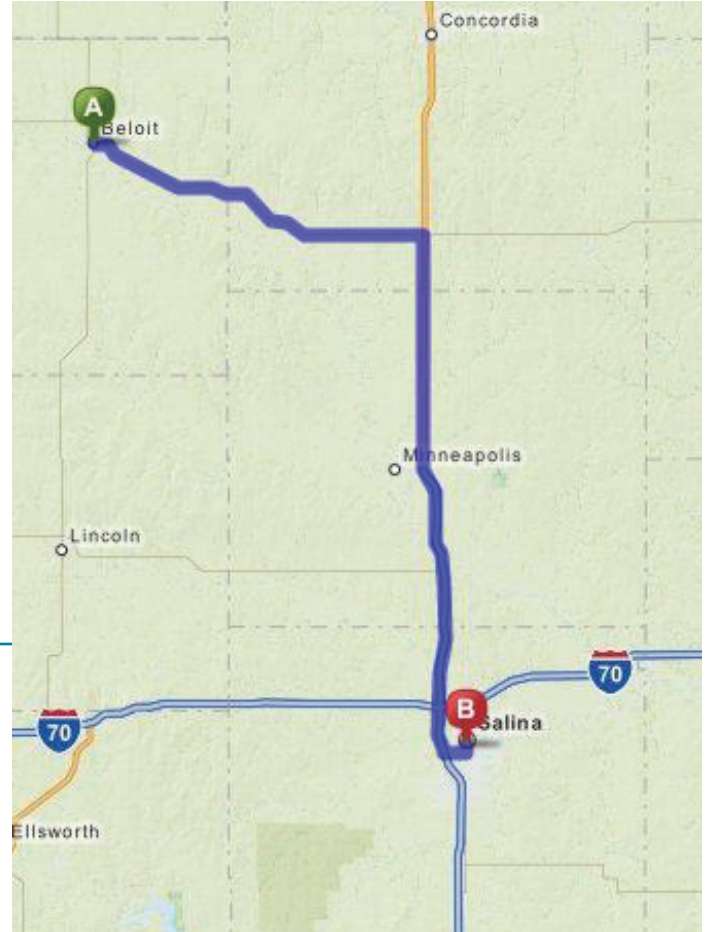




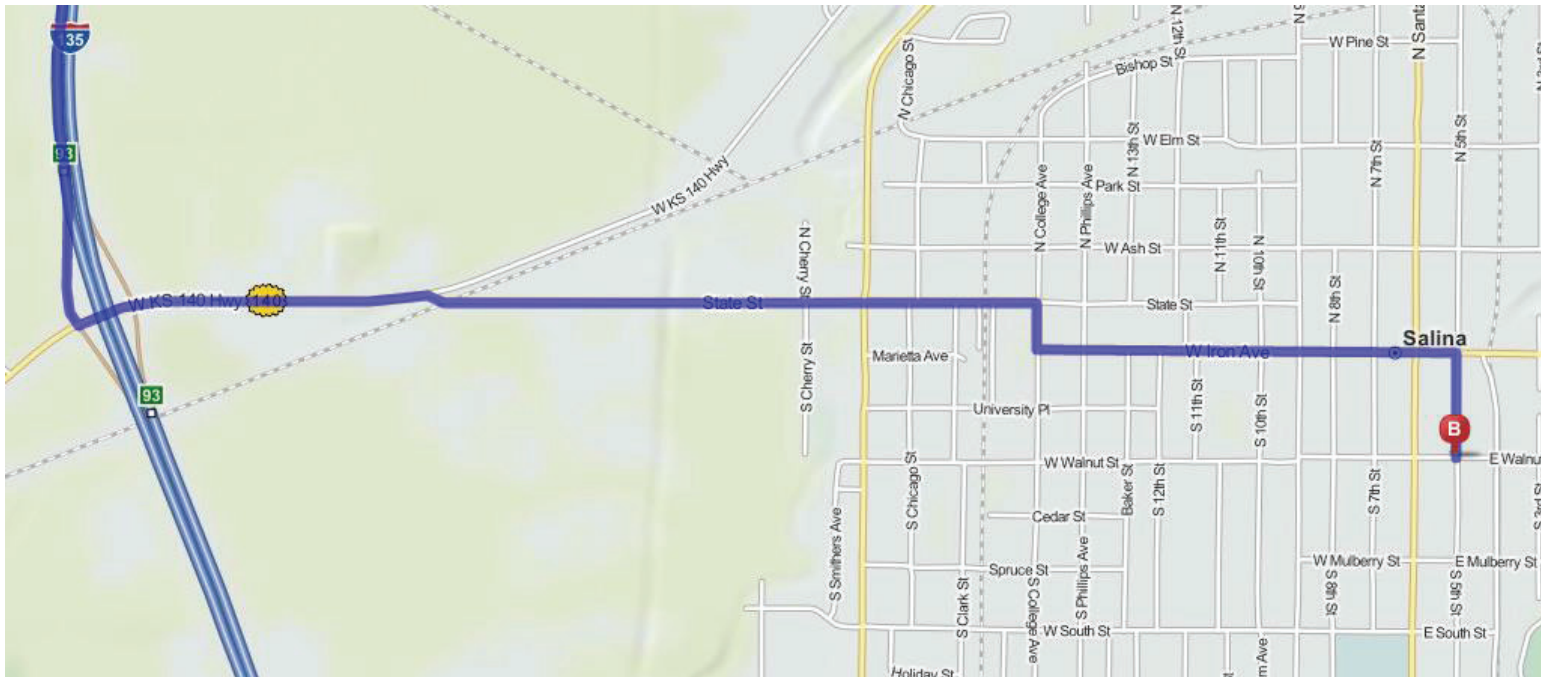
For Vision. For Health. For Life.

Beloit to Salina Surgical Associates

1. Go East on US-24 - 25 miles
2. Take the US-81 South Exit – 37 miles
3. Take State Street EXIT 93
4. Turn left onto State Street – 1 mile
5. Turn Right onto N College Ave
6. Take first left onto W Iron Ave – 0.5 miles
7. Turn right onto S 5th St – 0.2miles
8. 200 S 5th St is on the right



Salina Surgical Associates
200 S. 5th St.
Salina, KS 67401



Chad J. Thompson, OD, Diplomate, ABO

Nick J. Richmond, OD

124 N Mill
Beloit, KS 67420

128 W Kansas Ave.
Smith Center, KS 66967

119 W 7th St.
Concordia, KS 66901

P: 785-738-3816 F: 785-738-4320

P: 785-282-6086 F: 785-282-3978

P: 785-243-2175 F: 785-243-4370