

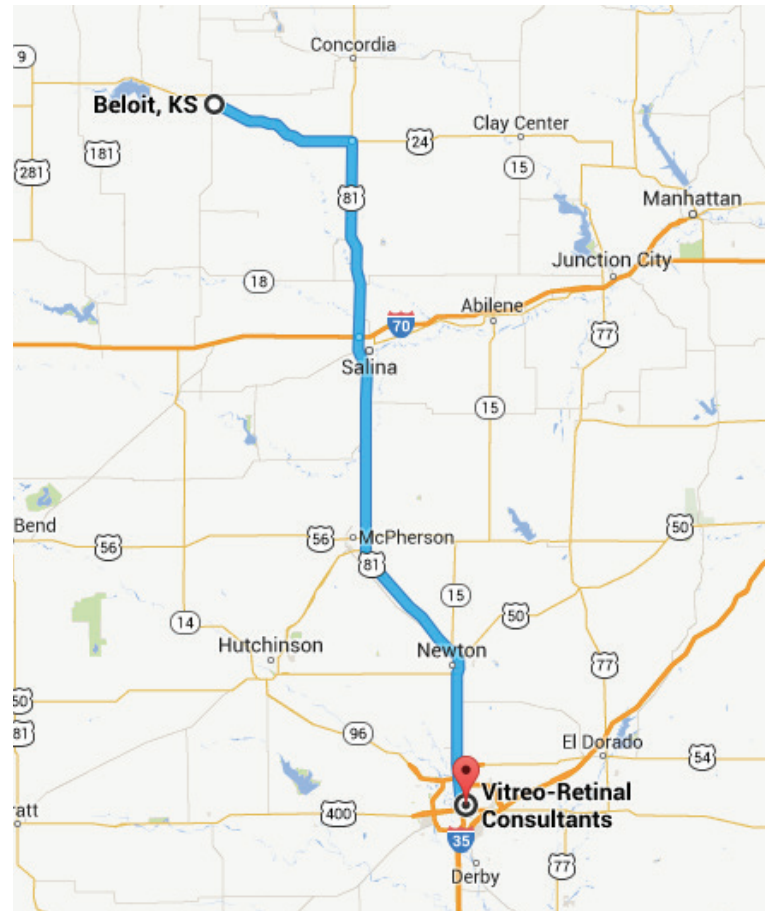
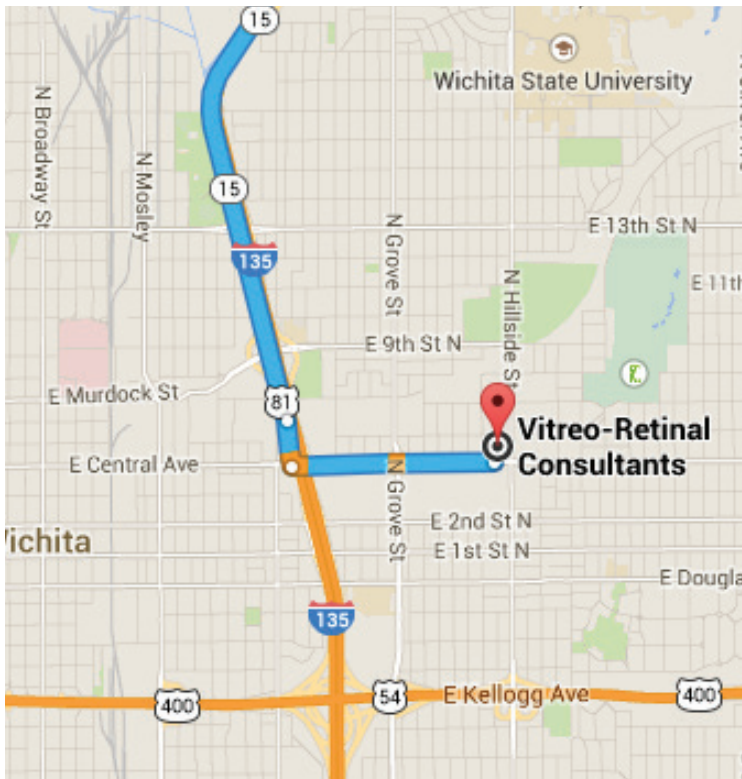


For Vision. For Health. For Life.

Beloit to Vitreo-Retinal Consultants

1. Take US-24 East to US-81 - 25 miles
2. Turn Right onto US-81 South
3. Follow US-81 / I-135 S to Central Ave, Exit 7A - 123 miles
4. Turn left onto E. Central Ave.
5. Turn left onto N. Lorraine Ave.
6. 530 N. Lorraine Ave. will be on the right

Vitreo-Retinal Consultants
530 N Lorraine Ave
Wichita, KS 67214



Chad J. Thompson, OD, Diplomate, ABO

Nick J. Richmond, OD

124 N Mill
Beloit, KS 67420

P: 785-738-3816 F: 785-738-4320

128 W Kansas Ave.
Smith Center, KS 66967

P: 785-282-6086 F: 785-282-3978

119 W 7th St.
Concordia, KS 66901

P: 785-243-2175 F: 785-243-4370