

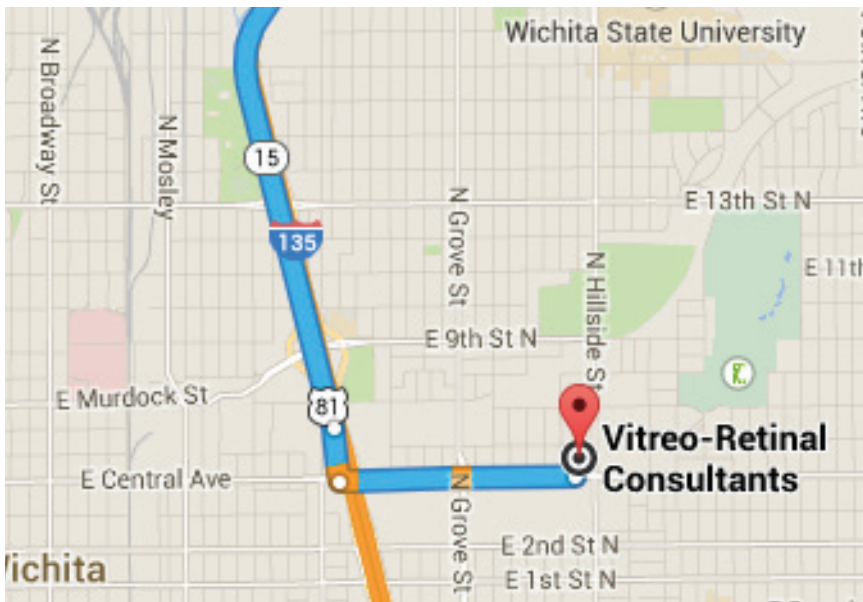


For Vision. For Health. For Life.

## Smith Center to Vitreo-Retinal Consultants

1. Start out going east on W Kansas St. toward US-281/S Main St. 0.02 mi
2. Take the 1st left onto US-281/N Main St. 0.5 mi
3. Turn right onto US-36/US-281. Continue to follow US-36. US-36 is just past Elm ST 61.1 mi
4. Take the US-81 ramp toward Concordia/Hebron, Neb. 0.1 mi
5. Take the 1st right onto US-81 S. 154.5 mi
6. Take the Central Ave. exit, Exit 7A. 0.2 mi
7. Turn left onto E Central Ave. 0.9 mi
8. Turn left onto N Lorraine Ave. 0.04 mi
9. End at 530 N Lorraine Ave. # 200

Vitreo-Retinal Consultants  
530 N Lorraine Ave  
Wichita, KS 67214



Chad J. Thompson, OD, Diplomate, ABO



Nick J. Richmond, OD

124 N Mill  
Beloit, KS 67420

P: 785-738-3816 F: 785-738-4320

128 W Kansas Ave.  
Smith Center, KS 66967

P: 785-282-6086 F: 785-282-3978

119 W 7th St.  
Concordia, KS 66901

P: 785-243-2175 F: 785-243-4370